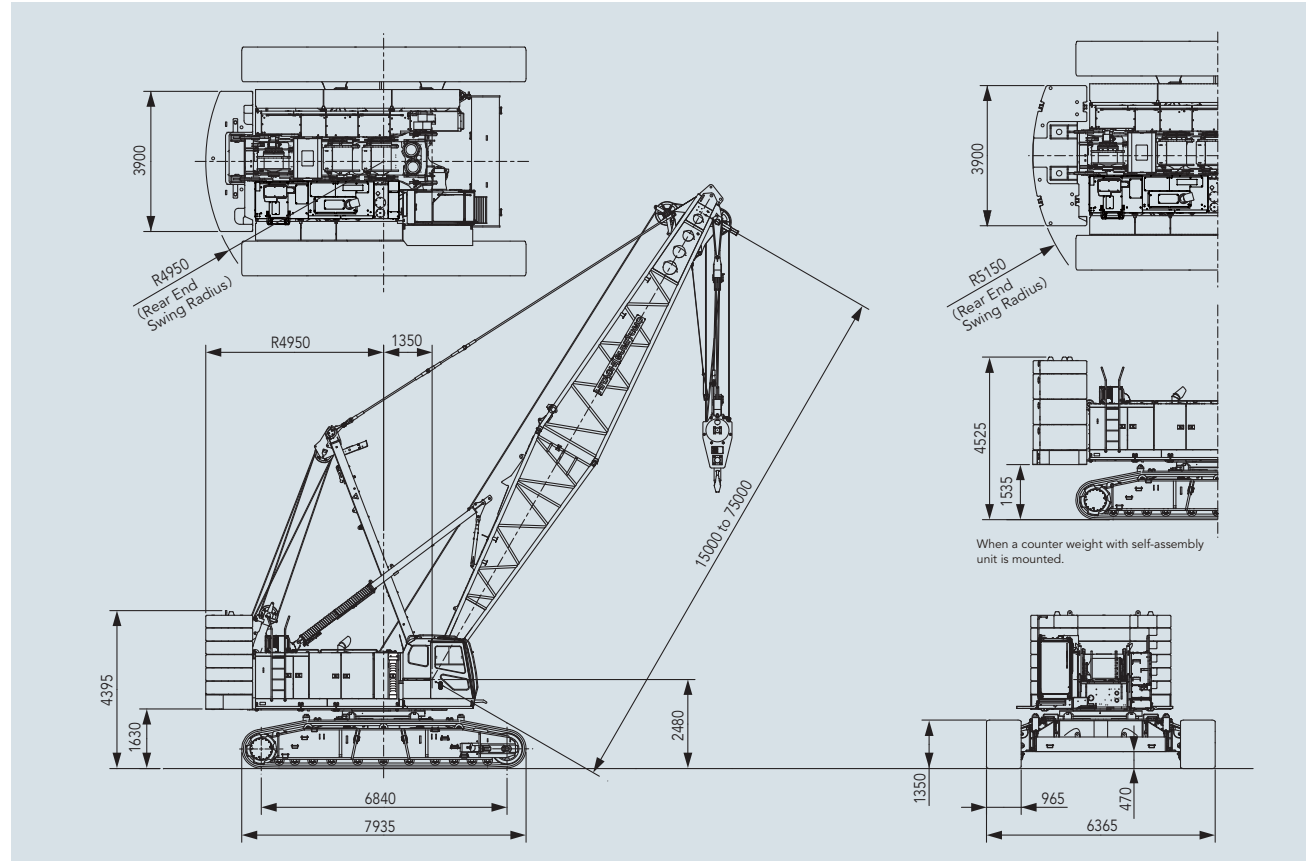


■ General dimensions

Units: mm



■ Specifications

Model		SCX1500A-3	
Application		Liftcrane	Clamshell
Max. lifting capacity	t × m	150 × 4.5	—
Basic boom length	m	15	15
Max. boom length	m	75	27
Crane jib length	m	10-28	—
Boom + crane jib length	m	63 + 28	—
Rope line speeds (*1)	m / min	110 (45)	64 Support and opening/ closing wire rope speed
Front/rear main drum (rated with 12 t load)			
3 rd winch (rated with 12 t load)	m / min	95 (30)	—
Boom hoist drum	m / min		44
Swing speed	min ⁻¹ (rpm)		1.8
Travel speed high/low(*2)	km/h		1.5 / 0.9
Gradeability	% (°)		30 (17)
Bucket capacity	m ³	—	2.5
Allowable gross weight	t	—	10
Max. digging depth	m	—	36
Engine	Make & model	Cummins QSB 6.7 (Stage IV / Tier 4 f)	
	Max output	kW/min ⁻¹ (PS/rpm)	
		201/2,000 (273/2,000)	
Ground contact pressure	kPa (kgf/cm ²)	103 (1.06) w/basic boom, 150 t hook block	91 (0.93) w/basic boom, 2.5 m ³ bucket
Operating weight	t	Approx. 139 w/basic boom, 150 t hook block	Approx. 126 w/basic boom, 2.5 m ³ bucket

Notes: 1. Rope line speeds vary under load and operating conditions (*1). 2. Travel speed is based on flat, level and firm supporting surface with no load and 15 m basic boom (*2).

- We are constantly improving our products and therefore reserve the right to change designs and specifications without notice.
- Units in this catalog are shown under International System of Units (SI). The figures in parenthesis are under the older British Gravitational System of Units.
- Illustrations may include optional equipment and accessories, and may not include all standard equipment.
- Standard equipment and accessories may vary by country and region.

Address inquiries to :

Hitachi Sumitomo Heavy Industries Construction Crane Co., Ltd.

9-3, Higashi-Ueno 6-chome, Taito-ku, Tokyo 110-0015, Japan
Phone: 81-3-3845-1387 Facsimile: 81-3-3845-1394
<http://www.hsc-crane.com>

SCX 1500A-3