



News Release

Dec 2011

Hitachi Sumitomo Heavy Industries Construction Crane Co., Ltd.

Hitachi Sumitomo Heavy Industries Construction Crane Co., Ltd. has launched a new variation of 550ton crawler crane "6000SLX", which has been introduced in June 2009. The new crawler crane includes the specification of the buggy mounted external counter weight, called "SL-B".

Newly developed "SL-B" provides excellent lifting performance. Its maximum lifting capacity is 6,097ton-meter in lift crane specification when the crane is connected to the buggy mounted 220 ton external counter weight by retractable extension beam. The buggy equips with traveling and steering function.

Further, middle range of lifting capacities of the specification is more than equal to ones of SCX6500 (650 ton).

In addition, maximum boom length is 126m in light boom configuration. In luffing tower boom configuration, the length can be 84m tower boom and 84m jib boom, the configurations provides wider working range.

<Main features>

1. "Three working modes provide great performance"

In this specification, buggy has three driving modes, Slewing mode, Trailer mode and Crab mode.

The buggy with the external counter weight can move smoothly along with the movement of the crane.

1) Slewing mode:

In this mode, steering angle of the buggy is accurately calculated to travel along with the crane in slewing operation.

The operator can also choose either "drive mode" or "trail mode" depending on the mass of external counter weight.

2) Trailer mode:

The buggy is followed by crane's movement with all tires in the front-directed.

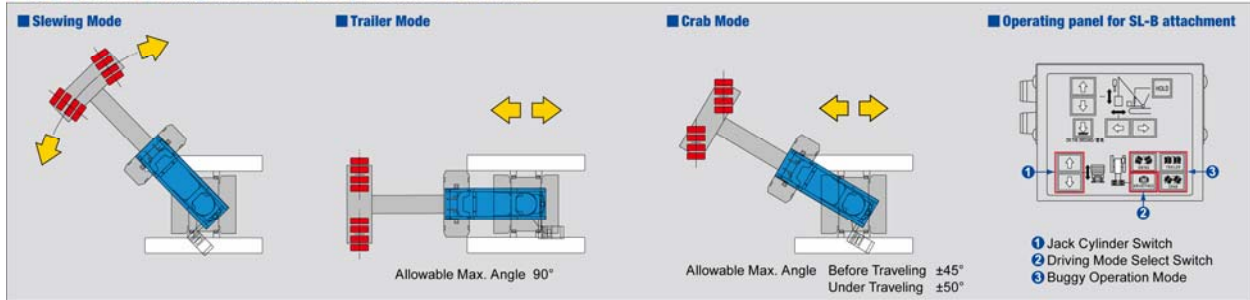
This function enables the crane to start traveling when the condition of which the crane and the buggy are at an angle of 90 degree. Therefore crane can switchback from forward to back.

3) Crab mode:

In crab mode, steering angle of tires is set in the same direction with the crane so that the buggy follows the crane traveling in parallel.

This function is useful at the jobsite near the construction buildings.

SL-B : Three operating modes can improve performance of the crane.



2. Extendable beam connects crane and buggy;

By using detachable and retractable beam, the distance of the crane to the buggy can be fixed at three points in 16m, 13.5m and 11m, depending on a situation at the jobsite.

3. Excellent lifting capacity;

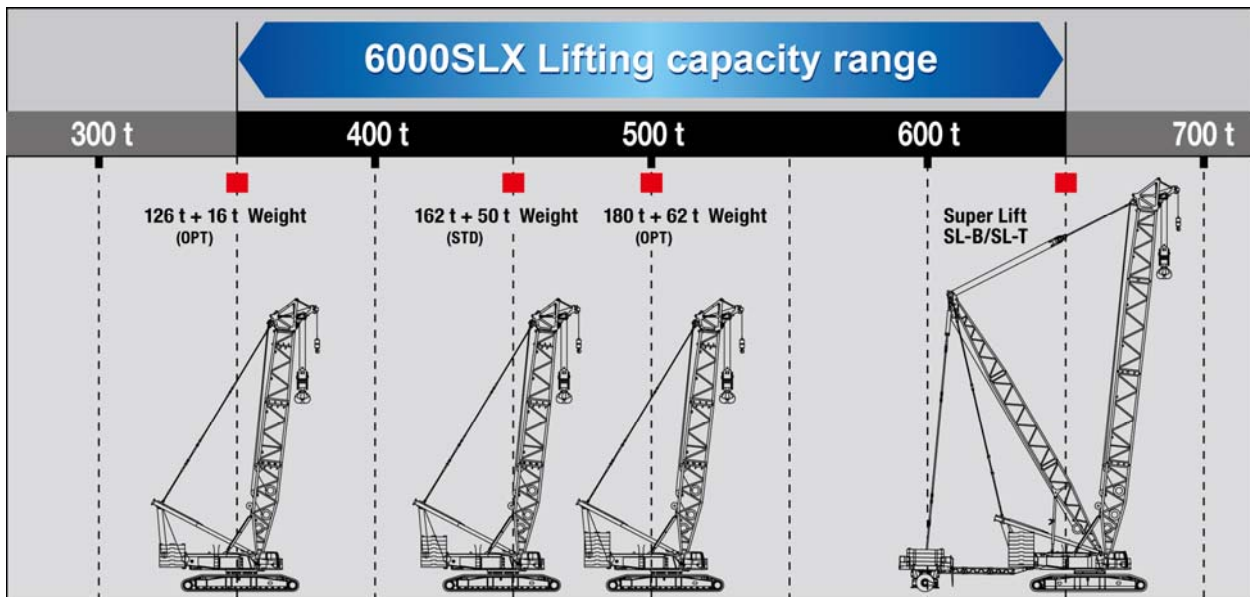
Maximum boom length is 126m in light boom configuration (18m longer than Std. machine). The combination of 84m luffing boom + 84m luffing jib is also available (12m longer than Std. machine for both boom and jib) for increasing its working range. The maximum working range can be 128m.

4. Cover wider classes;

By reducing upper and lower counter weight from the base machine in Std. specification, the crane ensures lifting capacity of 350t class crane.

With the buggy and 220t external counter weight, the crane has lifting capacity of more than 650t class crane in the middle working radius range.

The machine provides wide range of performance and increases its availability for a several kind of jobsites.



*1: Figures shown in "○t + ○t" indicates mass of counterweight + mass of lowerweight.

6000SLX SL-B



*The picture includes optional 20t external counterweight.

<Address inquires to>

Hitachi Sumitomo Heavy Industries Construction Crane Co., Ltd
Sales and Service Planning Dept.

Address: 9-3, Higashi Ueno 6-chome, Taito-ku
Tokyo 110-0015 Japan

Telephone: 81-3-3845-1396

URL: <http://www.hsc-crane.com>